



League of Oregon Cities Fall Conference

Inclusive Community Events
from Planning to Celebration

3 October 2025

1

Introductions


Presenters

Jan Campbell, Chair TriMet Committee on Accessible Transportation

Annadiana Johnson, Advocate for people living with disabilities & older adults

Patricia Kepler, Accessibility Analyst for the Portland Police Bureau

Lisa Strader, PBOT ADA Coordinator



Americans with Disabilities Act (ADA)

- ADA signed into law 1990
- It is the largest minority group and the only minority group that anyone can join at any time.
- Disability crosses all cultures, faiths, ethnicities and genders.
- Federal civil rights law the prohibits discrimination against people with disabilities in everyday activities.
- Community events are everyday activities and need to be accessible.

Inclusion is Important

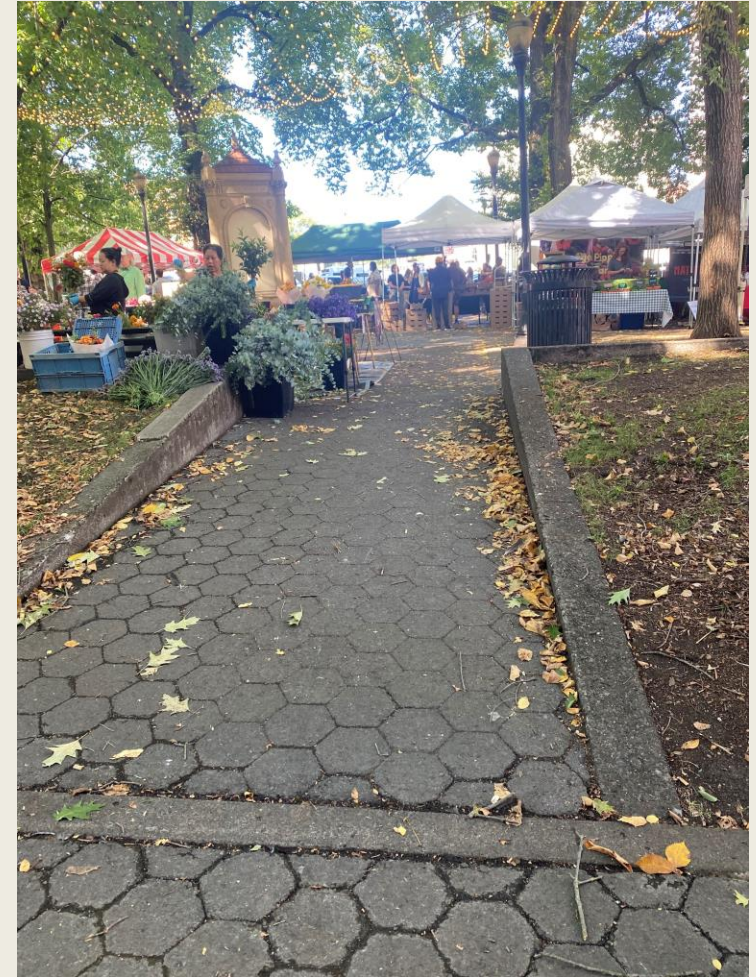


- Community Festivals bring People Together & Build Community
- Shared Experience Builds Relationships
- In relationship, we can learn from each other.

Selecting Your Site

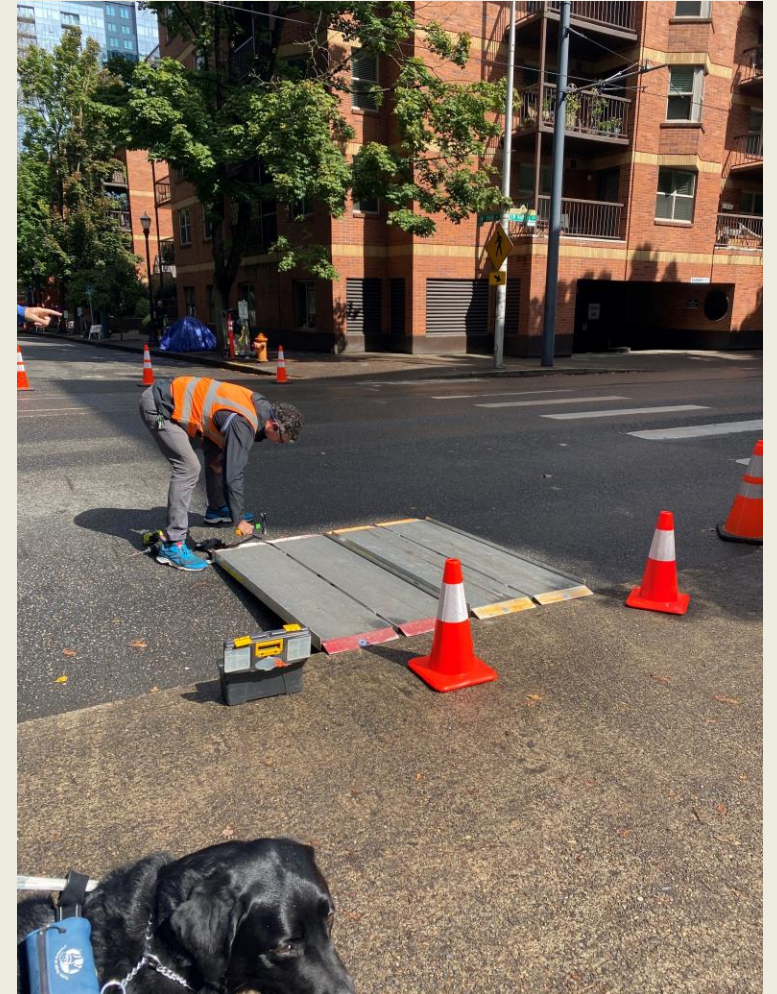
Site Considerations

- Transportation
 - Accessible parking
 - Drop off
 - Transit
- Entrance
 - Accessible
 - Information
- Clearance
 - Tree branches over paths
 - Signs out of paths
- Surfaces
 - Firm, stable, slip resistant
- Weather
 - Covered areas
 - Misters or heaters



Portland requires accessibility sign-off by a person w/ a disability.

More site considerations



Still More Site Considerations



Preparing Volunteers & Staff

Volunteer Basics

- Provide definition of ADA
- Identify different types of disabilities
- Engaging w/ people with disabilities
 - Announce yourself and say you are a volunteer
 - Be respectful
 - Don't make assumptions
 - Talk to the person, not a companion
 - Always ask before you assist
 - What assistance do you need & how best to provide it
- Know the location of key amenities or events

Effective Communication

Event Communications

- Website
- WCAG 2.1 AA
- Accessible registration forms
- Social media posts
- Alt Text for images
- How to request an accommodation
- Readable signage
 - Font size
 - Contrast
 - Mounting height

[Accessible Event Checklist](#)

Vendors



Event Activities

- Access to all activities, including play areas.
- Accessible points of sale
- Accessible seating for dining
- These are subcontractors of the municipality & must also follow ADA
- Consider offering them the training offered to volunteers

Personal Needs



Accessible restrooms



Accessible handwashing

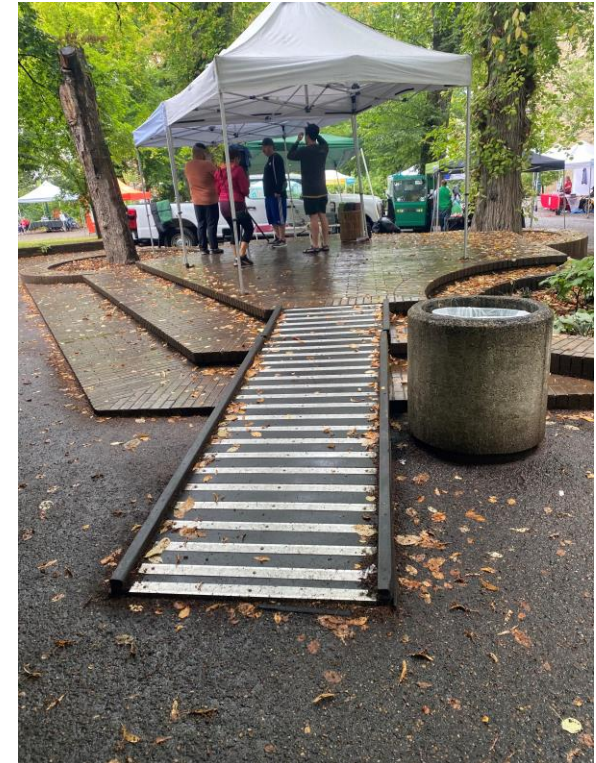


Pet relief area w/ water

Concerts

Performance Venue

- Access to the stage
- Flat, level surfaces around the stage
- Accessible seats if seating provided
- ASL interpreter and/or closed captioning



Questions

Resources

- Jan Campbell, Janc988@aol.com
- Annadiana Johnson, Annadiana.T.Johnson@gmail.com
- Patricia Kepler, Patricia.Kepler@police.portlandoregon.gov
- Lisa Strader, Lisa.Strader@PortlandOregon.gov, 503-823-5703

- [ADA National Network Making Temporary Events Accessible](#)
 - <https://adata.org/guide/planning-guide-making-temporary-events-accessible-people-disabilities>
- [Making Accessible Forms](#)
 - <https://www.youtube.com/watch?v=ly2DoFLkFxo>
- [Hidden Creeks Park](#)
 - <https://www.hillsboro-oregon.gov/our-city/departments/parks-recreation/parks-nature/hidden-creek-park-west>